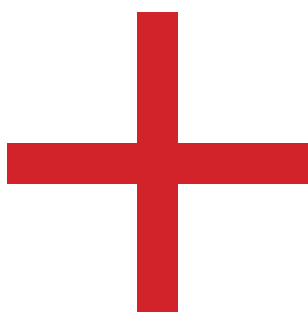


GUIDE TO ENTERING &
SURVIVING
JAPAN
AND TOKYO



HINOMAPLE

dru.tang@hinomapple.com
www.hinomapple.com

Copyright © 2013 by Andrew (Dru) Tang

All rights reserved. No part of this publication may be reproduced, distributed, or transmitted in any form or by any means, including photocopying, recording, or other electronic or mechanical methods, without the prior written permission of the publisher, except in the case of brief quotations embodied in critical reviews and certain other non-commercial uses permitted by copyright law. For permission requests, write to the address above.

ORDERING INFORMATION

Copies of this book are available online at www.hinomapple.com

All photos except when noted below are Copyright © by Andrew (Dru) Tang

Photos of Japanese money are courtesy the Bank of Japan.

Photo of the Japanese Immigration Card is part of the public domain and scanned by
日本国法務省入国管理局 (Immigration Bureau, Ministry of Justice of Japan)

Photo of the Japanese Customs Card is a scanned copy.

Photo of the Pasma Card is Copyright © by Derek Wallace

Photo of the Ryokan is Copyright © by Jeremy & Melody Herve

Photo of the Capsule Hotel is Copyright © by Kana Nishimura

Photos of Tokyo city © by Dennis Lo

Layout and design has been done by Digital Lapin

PREFACE

This guidebook is designed to help you get into, around, and out of Japan, specifically Tokyo. Tokyo is the main international hub with Osaka being the secondary international hub. There are several international airports in Japan, but this guide focuses on Tokyo. Most of the processes of getting into Japan will be the same regardless of where or how you enter Japan. Tokyo is the largest city in Japan, thus it will have greater transportation opportunities as well as options for activities. Getting around the other major cities in Japan will generally be the same. If you are planning to travel to the rural areas of Japan, things will not be the same but it won't be that different.

This guidebook is split into two parts. The first part has detailed information, photos, and useful phrases to aid you in getting in and around Tokyo and by proxy, Japan. Following the detailed information is the appendix, a reference of information and phrases to help you in your journeys.

This guidebook has been a culmination of my own personal experience living and travelling throughout Japan and the world. I arrived in Japan for the first time in 2005 and have lived here ever since. I have travelled extensively throughout Tokyo and have been to over half of Japan. I am usually travelling to both Narita and Haneda Airport at least once a year and through my company, HinoMaple, I have been able to keep up to date on changes to the transportation through both airports. If you have any questions, or would like help to plan your trip to Japan, please head over to HinoMaple (www.hinomaple.com) to get information about my travel services. If you would like to read more about Japan, feel free to check out my blog (<http://blog.hinomaple.com>) which is updated twice a week. I am also in various different social media. Full information is available at both my blog and HinoMaple.

If any information is wrong, out of date, or you do not agree with it, feel free to let me know. You can e-mail me at dru.tang@hinomaple.com with any concerns. Any information changes will be made in future versions of this book.

If you are reading this book and haven't paid for it, you have obtained it illegally. I am an independent author who is trying to make a living. Feel free to use this guidebook either way, but if you feel it was helpful for you in planning your trip to Japan, please purchase it legally from my website HinoMaple. (www.hinomaple.com)

If you would like personalized help getting in and around Tokyo, I offer concierge services and orientation services for people visiting Japan or coming to live in Japan. Please visit HinoMaple for information. (www.hinomaple.com)



TABLE OF CONTENTS

Arriving in Japan



ARRIVALS

NARITA AIRPORT

HANEDA AIRPORT

USEFUL PHRASES

Transportation



LOCAL TRAINS

LOCAL TRAIN TICKETS

BULLET TRAINS

TAXIS

BUSES

USEFUL PHRASES

Accommodation



TYPES OF ACCOMMODATION

USEFUL PHRASES

Restaurants & Bars



TYPES OF RESTAURANTS & BARS

USEFUL PHRASES

Shopping



MONEY

PAYMENT

SIZES

VENDING MACHINES

COIN LOCKERS

USEFUL PHRASES

Cultural Activities



TEMPLES & SHRINES

MUSEUMS & GALLERIES

ONSEN

USEFUL PHRASES

Daily Survival in Japan



WIFI IN JAPAN

WASHROOMS & TOILETS

ELECTRICITY

MAIL

GARBAGE

USEFUL PHRASES

Appendix



HOLIDAYS IN JAPAN

PEOPLE WITH DISABILITIES

EMERGENCY NUMBERS & PHRASES (NEEDS TO BE WRITTEN)

NUMBERS, DATES, & COLOURS

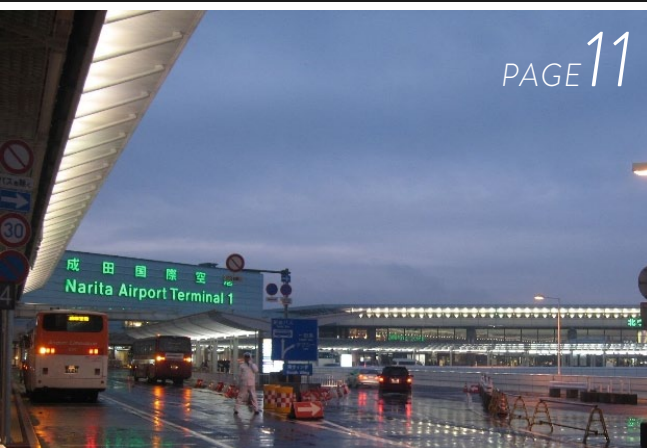
TRAIN MAP

Arriving in Japan



PAGE 7

ARRIVALS HELPING YOU ARRIVE IN JAPAN



PAGE 11

NARITA AIRPORT HELPING YOU TO YOUR HOTEL FROM NARITA



PAGE 27

USEFUL PHRASES

HANEDA AIRPORT HELPING YOU TO YOUR HOTEL FROM HANEDA



PAGE 22

ARRIVALS

There are two major ports of entry into Tokyo. Narita Airport is the major international airport while Haneda Airport focuses mainly on domestic flights. Several international flights do operate from Haneda Airport and all immigration procedures are the same for all international airports in Japan.

IMMIGRATION & CUSTOMS PROCEDURES

All arriving international flights go through the same procedures at all airports. Upon arriving at your gate, follow all of the signs to the quarantine inspection and immigration. You will first pass through quarantine, then go through immigration. After immigration, you can pick up your luggage and proceed through customs before getting out of the secure area of the airport.

DOCUMENTS TO PREPARE FOR ARRIVAL

- **PASSPORT**
- **DISEMBARKATION & EMBARKATION CARD**
- Flight Information
You will need to provide both your arriving and departing flight information.
- Hotel Information
(Including Address or nearest Station)
If you plan to stay in several hotels, having the information for your first hotel is sufficient for most travellers.
- **CUSTOMS DECLARATION CARD**
- **HEALTH INFORMATION CARD**
- This card is not standard and will only be handed out on a flight by flight basis.
- **TRAVEL ITINERARY**
- While it is unlikely that you will be required to provide a full travel itinerary, having it on hand, including hotels you have booked or intend to book, may help speed up this process.

DISEMBARKATION & EMBARKATION CARD

CUSTOMS DECLARATION CARD

QUARANTINE

Quarantine is a very simple procedure. It is often just walking past an official without any questions being asked, so you can proceed past the quarantine gates without stopping. If you have a Health Information Card, present it to the attendant at one of the booths and proceed to Immigration.

IMMIGRATION

For any visitor to Japan, including those arriving for the first time on a working holiday visa, you must go to the "Foreign Passport" line. There are generally 3 lines, "Foreign Passport", "Foreign Resident", and "Japanese Citizen". For Narita Airport, expect lines to take up to 1 hour to get through immigration during the busiest times. Do note that Japan requires all foreign nationals to be photographed as well as have both index fingers scanned. The following steps will guide you through the basic flow of immigration.

- **HAND OVER YOUR PASSPORT, DISEMBARKATION AND EMBARKATION CARD, AND CUSTOMS DECLARATION CARD.**

- **ANSWER ANY QUESTIONS THE IMMIGRATION OFFICER HAS.**

- **CAMERA AND FINGERPRINT SCANNER:**

- Adjust the camera so you can see your eyes in the mirror and await instructions.

- Place both index fingers on the finger print scanner and press down when instructed to do so.

- **RECEIVE YOUR DOCUMENTS AND PROCEED TO THE BAGGAGE CLAIM.**

- Your Embarkation Card will be stapled into your passport. **DO NOT LOSE THIS.** It is required when you depart from Japan.

BAGGAGE CLAIM

As with any other airport in the world, after immigration, head directly to the baggage claim to pick up your bags.

CUSTOMS

After you pick up your baggage, head to the final customs gate. If you have nothing to declare, proceed to the green line. If you have to declare something, proceed to the red line.

If you are carrying over ¥1 million (or the equivalent) in cash or cash equivalent, you are required to declare it. This is standard in most countries to prevent money laundering.

The following are your duty free limits when entering Japan (Note: All limits are subject to change. Please refer to *Japan Customs* for official up to date limits)

Item		Limit	Notes
Alcohol		3 Bottles	Up to 760cc per bottle
Tobacco	Cigars	100 Cigars	A maximum of 500 grams of tobacco is allowed if you mix various tobacco products.
	Cigarettes	400 Cigarettes	
	Other	500 Grams	
Perfume		2 Ounces	
Other		¥200,000	The total overseas market value of all articles other than the above items must be under ¥200,000. Any item whose overseas market value is under ¥10,000 is free of duty and/or tax and is not included in the calculation of the total overseas market value of all articles. There is no duty-free allowance for articles having a market value of more than ¥200,000 each or each set.*

CONNECTING TO DOMESTIC FLIGHTS

If you are travelling on Japan Airlines or All Nippon Airways, you need to be aware that most international flights arrive and depart at Narita Airport and most domestic flights arrive and depart at Haneda Airport. If you are transferring between airports and taking a flight within a 24 hour period, you are generally allowed 2 pieces of luggage on a domestic flight. Usually domestic flights allow only 1 piece of luggage. If you have more than 24 hours, you can try to negotiate with the staff to allow a second piece of luggage, but don't expect a lot of leniency.

If you are arriving at Kansai International Airport, the main domestic airport in the region is Osaka International Airport. Kobe Airport is also a secondary domestic airport of the region. You are also allowed 2 pieces of luggage on a domestic flight as long as the flight is within 24 hours of your international flight.

DOMESTIC FLIGHTS

Domestic flights are not as restrictive as international flights. While the same carry-on rules apply, you are generally allowed to check in for your flight up to 1 hour before your flight. It is better to arrive early but they have special lines if you are running late for your flight. Both Japan Airlines and All Nippon Airways minimize the use of check-in staff and rely on self-check-in terminals. Airline staff is available to help you and instructions on the self-check-in terminals are in English.

TRAVELLING IN JAPAN

It is important to understand that as a visitor to Japan, you are required by law to carry your passport with you at all times. Photocopies are not allowed.

NARITA AIRPORT

Narita Airport is the main international airport of Tokyo with only a few domestic destinations. It is also the main low cost carrier airport of Tokyo.

TRANSPORTATION TO & FROM TOKYO

Narita is located less than 60km from Central Tokyo. There are several options for getting to your destination in Tokyo or Yokohama from trains to buses. Everyone at the ticket counters is capable of speaking simple English. Just mention the station or stop and they can help you.

BUSES

The Airport Limousine is a convenient way to your hotel if your hotel is on the list of stops for the Airport Limousine. It provides good door to door service with few to no problems. There are also a few low cost buses such as the Tokyo Shuttle that cater to those flying on Low Cost Carriers. While the buses are susceptible to traffic problems, these tend to be minimal aside for the morning rush hour into Tokyo. You can easily purchase tickets soon after you clear customs.

TRAINS

There are several train routes to and from Narita and Central Tokyo. After you exit customs and the secure area, follow the signs to the "Trains" and head to the basement. Buying train tickets on the main floor of either Terminal 1 or 2 is usually a bad idea as it is often very busy and they don't exchange JR Passes or sell special tourist passes.

Two train companies operate at Narita Airport, East Japan Railway (JR) and Keisei Electric Railway. Both companies offer a range of services from reserved express trains to regular express trains. The time difference can be significant depending on where you plan to go and the prices can also vary widely.



AIRPORT LIMOUSINE

Cost: ¥2400-¥3500

The Airport Limousine is the most popular bus service from Narita Airport. As you exit the secure area, the ticket counters are very close. You can easily approach the staff and purchase tickets as well as get information on where to board your bus. To return to Narita Airport, check with their website to ensure you know where you can purchase tickets. In most cases, you can purchase tickets at the hotel where you are dropped off, or at the ticket window near the major stops. Some hotels are drop-off only.

Note: The Limousine & Metro Pass is generally worth it. Purchasing a round trip ticket on the Airport Limousine + 2 day Metro Pass combo is the same cost as purchasing a round trip ticket on the Airport Limousine. The 2 day Metro Pass will essentially be free. A 1 way Limousine ticket and 1 day Metro Pass will also save you money as the Metro Pass will cost approximately ¥100.



PROS:	CONS:
<ul style="list-style-type: none">— Door to door service if your hotel is on one of the routes.— Provides better access to certain areas of Tokyo such as Odaiba and Haneda Airport.	<ul style="list-style-type: none">— Susceptible to traffic.— Runs less frequently than train service.— Less legroom than a train.

TOKYO SHUTTLE & THE ACCESS NARITA

Cost: ¥1000

Tokyo Shuttle and *The Access Narita* are two new bus services providing transportation services to Narita Airport. They offer the cheapest method of getting to and from Central Tokyo. Buses depart at least once an hour from Narita to Tokyo Station for both companies. It is also the only mode of transportation that will arrive at the airport when it opens. If you are taking a flight on a low cost carrier, you can either sleep at the airport or take the overnight bus to Narita.

Note: You can purchase tickets at the Keisei Bus Counter at Narita Airport for the Tokyo Shuttle. Tickets can be purchased from the driver for both companies on a first come first serve basis. You can also reserve seats at convenience stores for the Tokyo Shuttle and online for The Access Narita, departures for Narita Airport only.



PROS:	CONS:
<ul style="list-style-type: none">— It is very cheap.— You will arrive in time for an early morning flight.	<ul style="list-style-type: none">— Not friendly to foreign passengers due to their limited ability with English.— No English website.— Difficult to book tickets if you don't speak or read Japanese.— Boarding location at Tokyo Station is difficult to find for non-locals.— No door to door service.— Limited destinations so you are more likely to be required to transfer at least once.

EAST JAPAN RAILWAY (JR)

JR is the largest train company in Japan that primarily operates commuter services between cities throughout Japan. JR provides services between Narita Airport and Tokyo Station and beyond. Most trains will continue to either Yokohama or the western side of Tokyo and a few other areas outside of central Tokyo. They have 2 train services at Narita Airport. The most famous service is the Narita Express (N'EX). There is also a regular express service that runs as a regular commuter train called the Narita Line.



NARITA EXPRESS

Cost: ¥3000-¥4500

The Narita Express (N'EX) is one of the most luxurious trains to and from Narita Airport. Trains run roughly twice an hour to western Tokyo and Yokohama. Prices vary depending on your destination. On your return trip, return to the station you disembarked and look for the "Midori no Madoguchi" window or office. You can purchase tickets to Narita from those offices. You can also purchase tickets from the black ticket machines at any station.

Note: The Suica & N'EX Pass is a pass that combines the Narita Express as well as a Suica transportation card (¥1500 value) starting at ¥3500 for a one way trip and ¥5500 for a round trip. This is a very good deal as you will also get a special tourist Suica card which is valid on all modes of public transportation in Central Tokyo. It is a very good deal but the return trip is only valid within 2 weeks. You must make use of your return ticket within 14 days of your trip from Narita Airport.

JR Passes can only be exchanged at the JR East Travel Center. Suica & N'EX passes can also only be purchased at the JR East Travel Center. It may be possible to do these services at the regular JR ticket counter when the JR East Travel Center is closed. Regular tickets on the Narita Express can be purchased at the JR ticket counter or at the ticket machines near the gate.



PROS:

- Few delays to your destination.
- Reserved seats.
- Ample space and the ability to walk around and use the washrooms.
- Power outlet so you can use your computer or other electronics.
- Free if you are using a JR Pass.

CONS:

- No door to door service.
- Some stations are not serviced by the N'EX and will require transfers.
- Can be the most expensive route into Tokyo.

NARITA LINE

Cost: ¥1280

(Service to Tokyo Station)

The Narita Line is a regular commuter express train that provides services once an hour to Narita Airport. You can purchase tickets at the JR ticket counter or at the ticket machines. For the return trip, you can purchase tickets at any station at any ticket machine. The Narita Line is a cheap alternative to the N'EX. The Narita Line runs from Narita Airport to Tokyo Station and continuing to Yokohama and beyond without the need to change trains. Do note that the Narita Line changes to the Sobu Rapid Line from Sakura Station to Tokyo Station. From Tokyo Station, it changes again to the Yokosuka Line to Yokohama. All trains from Narita Airport will travel to Yokohama but not all trains will return to Narita Airport.



PROS:

- Cheaper alternative to the N'EX.
- Few delays to your destination.

CONS:

- Infrequent service.
- You are travelling with other commuters. The morning rush hour can be a terrible experience.
- No space for large luggage. There is a small rack for small luggage but most suitcases will not fit. Carry-on luggage may fit on these racks.
- No door to door service.

KEISEI ELECTRIC RAILWAY

The Keisei Electric Railway is a commuter train company that serves the suburbs between Tokyo and Narita. They provide the only direct train service between Narita Airport, Ueno, Asakusa, and Haneda Airport. It is a good alternative to the N'EX when travelling to northern Tokyo but more confusing than using the N'EX or the Narita Line.



©dru/HinoMaple

KEISEI SKYLINER

Cost: ¥2400

The Keisei Skyliner is a reserved train that runs 2-3 times an hour. The service is the same as the N'EX but with only one destination, Ueno. You can purchase return tickets at the ticket machines at Narita Airport, Keisei Ueno Station, or at Nippori Station. You can also go to the ticket booths and purchase tickets from an attendant at these stations to avoid any mistakes.

Note: Upon entering the ticket gate, follow the orange signs to the Narita Sky Access Line.

Note: The Keisei Skyliner has its own combination ticket and transportation pass but it isn't as good as the Suica & N'EX Pass. A one-way trip with a 2 day Tokyo Metro Pass is generally not worth it. The best deal is the round trip Keisei Skyliner with a 1 day Tokyo Metro Pass or the round trip Keisei Skyliner with a 2 day Tokyo Metro Pass. Unlike the Suica & N'EX Pass, the Tokyo Metro Pass is valid only on Tokyo Metro Lines.



PROS:

- Cheaper alternative to the N'EX and faster if you are going to northern Tokyo.
- Few delays to your destination.
- More reliable than the N'EX or Sobu Rapid Line.
- Ample space and the ability to walk around and use the washrooms.
- Power outlet so you can use your computer or other electronics.
- Fastest service to Central Tokyo.

CONS:

- Limited destinations so you are more likely to be required to transfer at least once.
- No door to door service.
- Can become expensive once adding in transfers.

NARITA SKY ACCESS LINE

Cost: From ¥1240
(Service to Asakusa Station)

The Narita Sky Access Line is a regular commuter train that provides direct access to Haneda Airport. It is a cheaper alternative to the Keisei Skyliner without the service to Ueno Station. The Narita Sky Access is also the most convenient route to Asakusa Station. To purchase tickets, just go to the ticket machines at the station.

Note: While there is no direct service to Ueno Station, you can transfer to the Keisei Main Line at Aoto Station to go to Ueno Station. The Narita Sky Access also follows a parallel line to the N'EX and Sobu Rapid Line from Tokyo Station to Shinagawa Station.

Note: Upon entering the Keisei Electric Railway fare paid zone, follow the orange signs to the Narita Sky Access Line.



PROS:

- Best cost performance of all of the trains.
- Few delays to your destination.
- Direct service to Haneda Airport.

CONS:

- You are travelling with other commuters. The morning rush hour can be a terrible experience.
- No space for large luggage. There is a small rack for small luggage but most suitcases will not fit. Carry-on luggage may fit on these racks.
- Limited destinations, specifically to western Tokyo.
- No door to door service.

KEISEI MAIN LINE

Cost: ¥1000

(Service to Ueno Station)

The Keisei Main Line is the cheapest method of transportation into Central Tokyo. The Keisei Main Line provides direct access to Ueno with transfers to Asakusa. It is the best method of transportation for backpackers and other budget travellers. To purchase tickets, just go to the ticket machine at the station

Note: Once you enter the Keisei Electric Railways fare paid zone, you will need to use your ticket and proceed through the purple gate to the Keisei Main Line.



PROS:

- Cheapest method into Tokyo.

CONS:

- You are travelling with other commuters. The morning rush hour can be a terrible experience.
- There are few spaces for large luggage. There is a small rack for small luggage but most suitcases will not fit. Carry-on luggage may fit on these racks.
- Limited destinations, specifically to western Tokyo.
- No door to door service.

TAXIS

Taxis are available at the airport outside of the arrivals floor of both terminal 1 and 2. Fixed fare taxis cost around ¥19,000 to ¥22,000 depending on your destination. It is generally not advised to take a taxi into Central Tokyo.

HELICOPTER

Narita Airport is serviced by 2 different helicopter charter services. The Heli Express allows up to 5 people to charter a helicopter from Narita Airport to the Tokyo Heliport near Shin Kiba Station, or their heliports in Saitama or Gunma Prefectures. Alternatively, the Mori Building City Air Services (MCAS) runs the same charter service with a landing pad at the ARK Hills Complex (Heliport). MCAS offers better services as they also offer free shuttle services in a private car to your final destination within Central Tokyo. Prices start at ¥260,000 for Heli Express and ¥280,000 for MCAS for a one way trip.

TRANSPORTATION TO HANEDA AIRPORT

If you are continuing to other destinations in Japan, you may need to transfer from Narita Airport to Haneda Airport. The best way is to take the Airport Limousine bus directly from Narita to Haneda. A slightly cheaper alternative is the Keisei Sky Access Line which also provides door to door service but without a dedicated area for your luggage.

TIPS

- If you are carrying a lot of baggage, you can get your bags delivered to your hotel from Narita Airport for a fee. Both terminals have services available on the arrivals floor.
- If you are staying in Japan, in transit, for a few days, you can store your large bags at the airport for a fee and not worry about carrying them throughout Japan.
- Narita Airport also has several companies offering mobile phone, smartphone, and SIM card rentals. You can visit their website for a full list of companies (http://www.narita-airport.jp/en/guide/service/list/svc_19_1.html)
- If you are in need of a drink or snack before your train or bus, there are convenience stores located within the terminals on the arrivals level and in the basement.

HANEDA AIRPORT

Haneda Airport has been growing as an International Airport over the last several years. A new International Terminal has opened but most flights depart and arrive in the early morning and late at night. The entry and exit procedures are the same as Narita Airport. Transportation is generally easier but often requires transfers. If you are taking a domestic flight, you are likely to be using Haneda Airport.

TRANSPORTATION TO AND FROM TOKYO

Haneda Airport has many choices for getting to and from your hotel. Buses tend to be the best if you have lots of luggage whereas trains are better for their reliability. Most international flights will arrive before the train services stop, but if you miss the last train, there are late bus services available as well.

BUSES

There are two bus services at Haneda Airport. The Airport Limousine has services to most major centres in Tokyo and Yokohama and the Keikyu Bus provides even more access to areas outside of Central Tokyo.

TAXIS

Taxis are available at the airport outside of the arrivals floor of all terminals. Taxi fare to Tokyo Station is approximately ¥6000 during the day. Your fare will depend on your destination and what time you board the taxi. It is generally not advised to take a taxi into Central Tokyo.

TRAINS

There are 2 railways connecting Haneda Airport to Central Tokyo and Yokohama. The Tokyo Monorail provides direct connections with Hamamatsucho Station on the Yamanote Line. The Keikyu Electric Railway has services to Shinagawa Station as well as direct services to both Yokohama in the south and Narita Airport in the east.

Transportation



PAGE 29

LOCAL TRAINS

HELPING YOU AROUND TOKYO



PAGE 33

LOCAL TRAIN TICKETS

HELPING YOU BUY TICKETS



PAGE 46

BUSES

HELPING YOU ON A BUS



PAGE 38

BULLET TRAINS

HELPING YOU GET OUT OF TOKYO



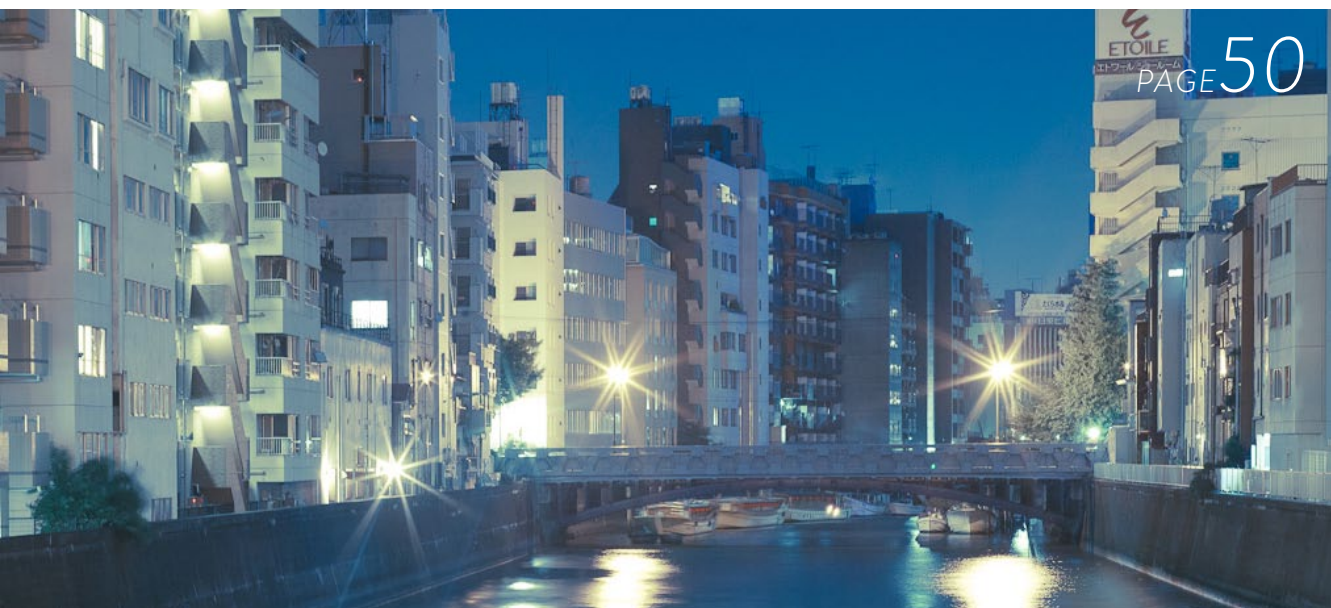
PAGE 48

USEFUL PHRASES



PAGE 44

ACCOMMODATIONS



ETOILE
HOTEL
PAGE 50

HOTELS HELPING YOU CHOOSE ACCOMMODATIONS

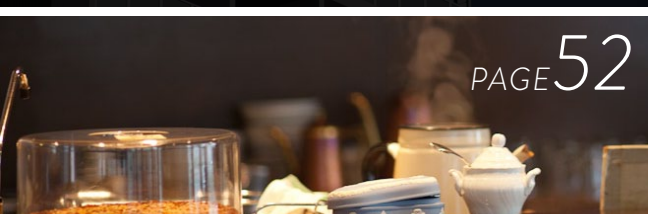


PAGE 51

APARTMENTS



PAGE 50



PAGE 52

USEFUL PHRASES

RYOKAN

RESTAURANTS & BARS



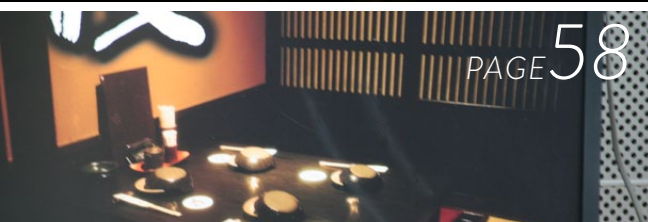
PAGE 54

STANDING BARS



PAGE 56

IZAKAYAS



PAGE 58

USEFUL PHRASES



PAGE 55

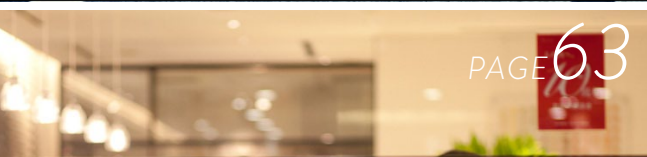
TEISHOKU

SHOPPING



PAGE 60

MONEY
HELPING YOU WITH CASH

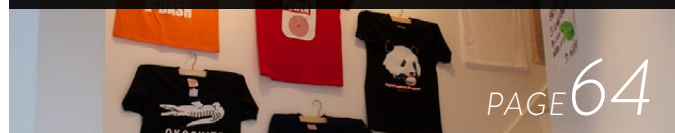


PAGE 63



PAYMENT
HELPING YOU PAY
FOR THINGS

SIZES
HELPING YOU FIND THE
RIGHT SIZE



PAGE 64

VENDING MACHINES
HELPING YOU BUY
FROM MACHINES



PAGE 65



PAGE 67

USEFUL PHRASES

CULTURAL ACTIVITIES

PAGE 69



TEMPLES & SHRINES

HELPING YOU RESPECT TEMPLES AND SHRINES



PAGE 71

ONSEN

HELPING YOU BATHE PUBLICLY



PAGE 71

MUSEUMS & GALLERIES

HELPING YOU VISIT
MUSEUMS AND GALLERIES



PAGE 72

USEFUL PHRASES

SURVIVAL IN JAPAN





HOLIDAYS IN JAPAN

HELPING YOU TO AVOID THE BUSY SEASONS IN JAPAN



PEOPLE WITH DISABILITIES

HELPING YOU IF YOU HAVE A DISABILITY



EMERGENCY NUMBERS & PHRASES

WHAT DO I DO IN AN EMERGENCY?



NUMBERS, DATES, & COLOURS



TRAIN MAPS